



Vessel Description: M/V “BBC Canada”

Ship’s Basic

Builders	ZHONGHUA SHIPYARD, SHANGHAI / CHINA
Delivered	1999
Type	MULTIPURPOSE TWEENDECKER
Classification	GL + 100 A5 E3 G + MC E3 AUT
Call sign	ZDGL5
IMO number	9197686
Flag	GIBRALTAR
Homeport	GIBRALTAR
Special features	GRAIN FITTED, STRENGTHENED FOR HEAVY CARGOES, EQUIPPED FOR THE CARRIAGE OF CONTAINERS, EQUIPPED FOR THE CARRIAGE OF DANGEROUS GOODS

Dimensions and Main Data

Length overall	100,57 M
Length between pp.	94,15 M
Breadth moulded	16,60 M
Depth to main deck	8,10 M
Draft summer	6,40 M
Height above keel	37,30 M
Deadweight summer	4.800 MT
GT/NT	4.086 / 2.016
Panama C. / UMS NT	3.744
Suez GT/NT	4.226,21 / 3.235,48

Speed/Consumption

At sea	ABT. 15,0 KN ON ABT. 15,5 MT IFO 380 PER DAY
In port without gear	1,0 MT MGO PER DAY
In port with gear	1,8 MT MGO PER DAY
Boiler fuel consumption in port	UP TO 1,0 MT MGO PER DAY
Shaft generator off due to adverse weather	+ 1,5 MT MGO PER DAY
Consumption data assumes shaft generator and reefer plugs disconnected. Vessel is burning fuels according to ISO 8217-1996.	



Hold/Hatches

No. of holds/hatches	1/1		
Hold	57,80 X 13,40 X 8,93 M		
Hold format	HOLD IS NARROWING IN FORE AND AFT PART. 2 TRANSVERSE BULKHEADS CAN BE PLACED IN 9 POSITIONS		
Tweendeck height	Lower deck	Upper deck	
	Position 1	5,51 M	2,85 M
	Position 2	4,07 M	4,29 M
	Position 3	2,97 M	5,39 M
Grain capacity	240.140 CBFT / 6.800 CBM		
Bale capacity	239.800 CBFT / 6.792 CBM		
Floor space on deck	855 SQM		
Floor space under deck	1.480 SQM		
Ventilation	30 AIRCHANGES PER HOUR		
Hatch	57,80 X 13,40 M		
Hatches/opening system	KVAERNER FOLDING TYPE / 8 SEGMENTS (4/4)		

Gear

Type	2 NMF CRANES
SWL	MAX 60 MT , 12,0 M / 35 MT , 21,3 M / 30 MT , 25,0 M
Situated	PORTSIDE
Combinable	UP TO MAX. 120 MT

Container Data

Number of containers	20'	40'	+ 20'	
	Hold	127	56	+ 15
	Deck	237	112	+ 13
	Total	364	168	+ 28
Stack weights	20'	40'		
	Tanktop	72 MT	90 MT	
	Hatchcover	40 MT	50 MT	
Other container sizes	45', 48', 49', 24.5' / WIDE BODIES (2500/2600 MM) / HIGH CUBES (9'6")			
Reefer plugs	30 (ALL ON DECK)			
Stability example 14 MT homogeneously loaded	205 TEU			
Stability example 20 MT homogeneously loaded	172 TEU			

Deck Strength

Tanktop	17,0 MT/SQM
Tweendeck	2,5 MT/SQM
Hatchcover	2,5 MT/SQM

Tank Capacities

HFO	471 MT
MGO	106 MT
Freshwater	83 MT
Ballastwater	1.846 MT

Machinery

Main engine	MAN 9 L 32/40 3.960 KW AT 750 RPM
Auxiliary engine	2X MAN 460 KVA - 390 KW - 50 HZ
Shaft generator	800 KVA / 640 KW
Bow thruster	300 KW
Freshwater generator	5,0 MT PER DAY
Propeller	VARIABLE-PITCH PROPELLER

IMO Cargo

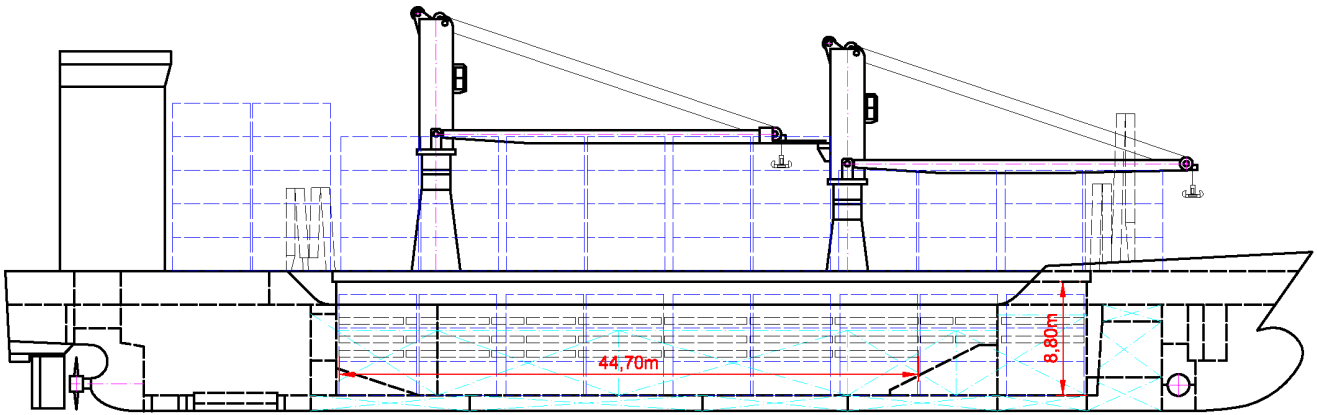
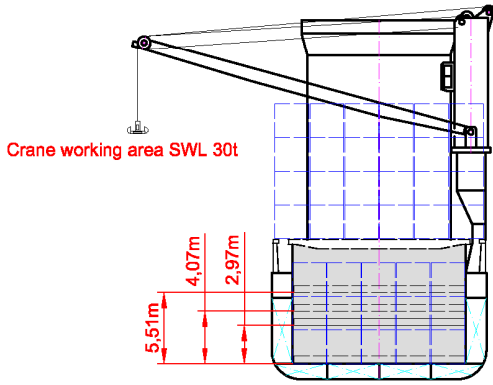
Vessel is fitted for/with the following classes (subject to IMDG code):	
Deck	ALL CLASSES
Hold	2.1 ; 2.2 ; 2.3 ; 3 ; 4.1 ; 4.2 ; 4.3 ; 5.1 ; 6.1 ; 8 ; 9 ; CLASS 1 WITHIN REACH OF WATERSPRAY SYSTEM IN FORWARD PART OF THE HOLD (ABT. 32M)
CLASS 7 CARGOES ARE ALWAYS EXCLUDED	

Nautical Equipment / Communication

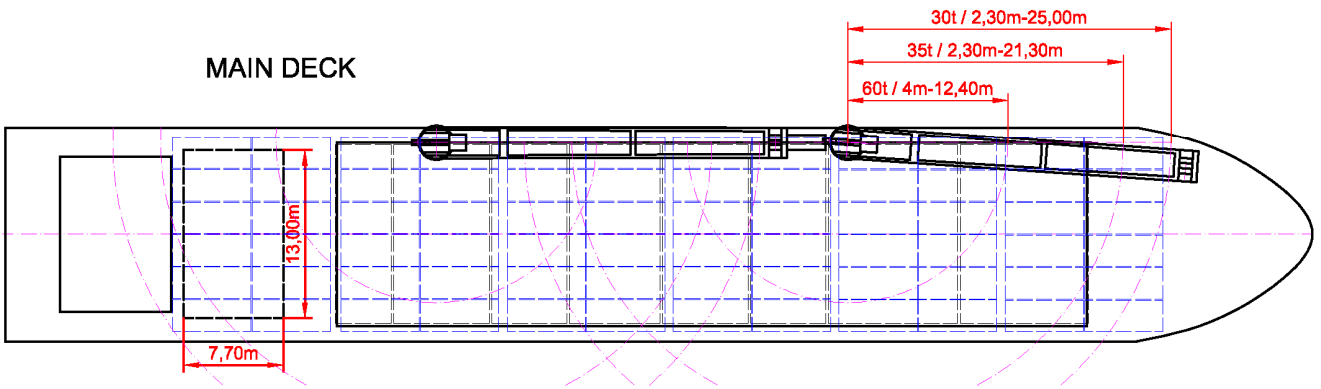
FULLY GMDSS FITTED, 2 RADAR, 2 GPS, GYRO, AUTOPILOT, SATCOM B + C, GSM-MOBILEPHONE
--

Note

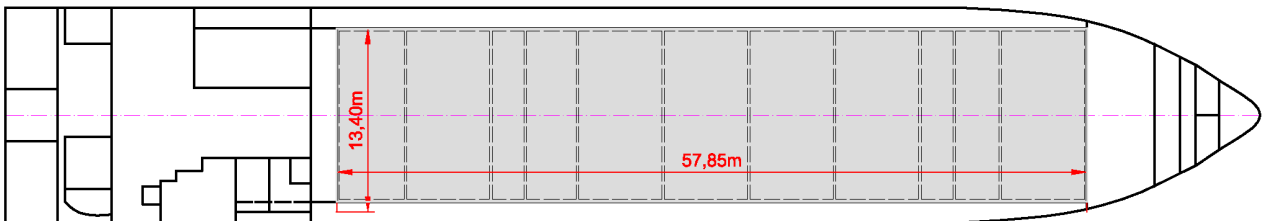
Speed and consumption figures are calculated basis maximum Beaufort 2, no swell and no adverse currents. Intake is always subject to vessel's stability, trim, permissible weights and is subject to regulations of visibility. Lifting capacity of vessel's cranes is subject to vessel's stability and can depend on cargo/ballast on board. Container data as well as grain/bale capacity assumes tweendeck ashore. All details are about and believed to be correct but given without guarantee and they must not be used as basis for charterparties or contracts without BBC's explicit written authority.
--



MAIN DECK



TWEENDECK



HOLDS & DOUBLE BOTTOM

